



Commercial  
**DualShade**  
350

MARE NOSTRUM

toldos • cerramientos • pérgolas • carpas



**Sauleda** Technical

Commercial  
**Dualshade**

**The beautiful palette of colour combinations will enhance the design of any outdoor space. We've designed an array of colour combinations that come together in three beautiful collections.**

Esta elegante paleta de colores mejorará el diseño de cualquier espacio al aire libre. Hemos diseñado una variedad de combinaciones de colores que se unen en tres atractivas colecciones.

**BRILLIANT COLLECTION**  
COLECCIÓN BRILLANTE

**The fabric colours within this collection are rich and luminous combinations that demand to be noticed.**

Los colores de esta colección son combinaciones vivas y luminosas que buscan destacar y llamar la atención.

**These fabrics glimmer in the sun's rays like a precious gemstone. Illuminate any outdoor space with a fabric from this collection.**

Estos tejidos brillan con los rayos del sol como una piedra preciosa. Iluminan cualquier espacio al aire libre.

**7683 Commercial Dualshade CITRUS**



**TERRAFIRMA COLLECTION**  
COLECCIÓN TERRAFIRMA

**The beauty and calmness of nature combine to form fabric colours that take you from lush rainforests to vast desert landscapes.**

La belleza y la tranquilidad de la naturaleza se combinan para formar colores que te trasladarán desde exuberantes selvas tropicales hasta vastos paisajes desérticos.

**Experience the beauty of the land at its finest when choosing a fabric from this collection for your design.**

Experimenta la belleza de la tierra en su mejor momento al elegir un tejido de esta colección.

**7683 Commercial Dualshade SAVANNA**



**DESTINATION COLLECTION**  
COLECCIÓN DESTINO

**Elegant and clean hues combine to form fabrics that are reminiscent of some of the world's most desired destinations.**

Los tonos elegantes y limpios se combinan para formar tejidos que recuerdan a algunos de los destinos más deseados del mundo.

**Inspired by the most alluring locations around the world, the fabric colours in this collection will transform any outdoor space into a beautiful oasis.**

Inspirados en los lugares más bellos del mundo, los colores de los tejidos de esta colección transformarán cualquier espacio al aire libre en un hermoso oasis.

**7683 Commercial Dualshade MALDIVES**



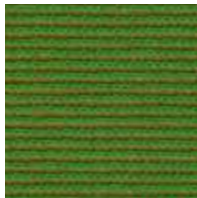
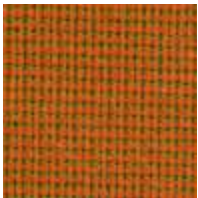
**Commercial DualShade 350 is a revolutionary new architectural shade.**

**This new fabric is truly unique in both its aesthetic and performance. Two different colour fibers are combined to form a single dual coloured fabric that produces a shimmering, iridescent effect when used in a tension structure.**

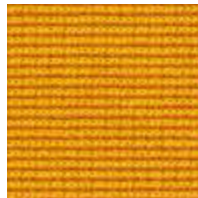
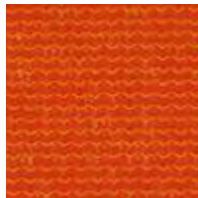
Commercial DualShade 350 es revolucionario tejido para protección solar.

Este tejido es único tanto en su estética como en su rendimiento. Se combinan dos fibras de diferentes colores para formar un solo tejido de doble color que produce un efecto brillante e iridiscente cuando se usa en una estructura de tensión.

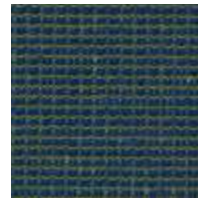
**BRILLIANT COLLECTION / COLECCIÓN BRILLANTE**



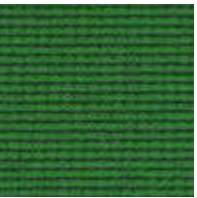
7683 Commercial Dualshade **CITRUS**  
(Orange/Bright Green)



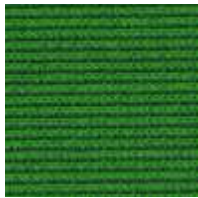
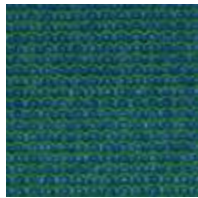
7688 Commercial Dualshade **SUNBURST**  
(Cherry red/Yellow)



7684 Commercial Dualshade **MACAW**  
(Aquatic Blue/Yellow)



7680 Commercial Dualshade **CHAMELEON**  
(Royal Purple/Bright Green)

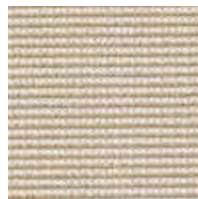
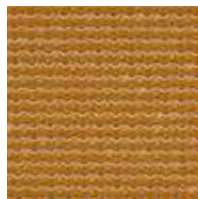


7690 Commercial Dualshade **TOPAZ**  
(Aquatic Blue/Bright Green)

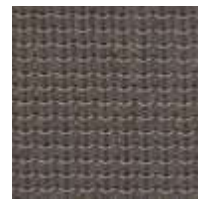
**TERRAFIRMA COLLECTION / COLECCIÓN TERRAFIRMA**



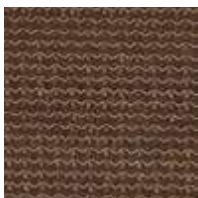
7681 Commercial Dualshade **AMAZONIA**  
(Brunswick Green/Bright Gren)



7691 Commercial Dualshade **SAVANNA**  
(Cedar/White)



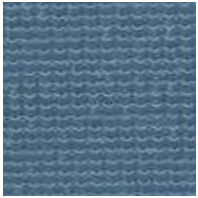
7686 Commercial Dualshade **COBBLESTONE**  
(Gunmetal/Spring Beige)



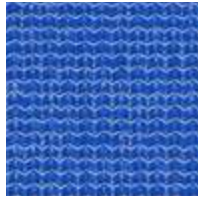
7685 Commercial Dualshade **GOLD RUSH**  
(Brown/Beige)



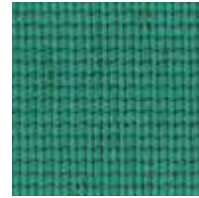
## DESTINATION COLLECTION / COLECCIÓN DESTINATION



7687 Commercial Dualshade CAPRI  
(Sky Blue/White)



7689 Commercial Dualshade SANTORINI  
(Aquatic Blue/White)



7682 Commercial Dualshade MALDIVES  
(Jade/Gunmetal)

## COMMERCIAL DUALSHADE 350

| Yarns/ Hilos  |                         | Strong 100% recyclable HDPE fabric<br>Fuerte tejido HDPE 100% reciclable |
|---|-------------------------|--|
| <b>Tensile Strength</b><br>Resistencia de tracción<br>AS 2001.2.31-2001 | <b>Warp</b><br>Urdimbre | 960 N/50 mm  |
|   | <b>Weft</b><br>Trama    | 1.100 N/50 mm  |
| <b>Tear resistance</b><br>Resistencia al desgarre<br>AS 2001.2.10       | <b>Warp</b><br>Urdimbre | 327 N  |
|   | <b>Weft</b><br>Trama    | 245 N  |
| <b>Bursting Force/</b> Fuerza de rotura                                 |                         | 1.959 N  |
| <b>Temperatura range</b><br>Rango de temperatura                        |                         | -30° a +70°  |
| <b>Width/</b> Ancho   |                         | 3 m  |
| <b>Nominal fabric mass</b><br>Masa nominal del tejido                   |                         | 350 gr/m <sup>2</sup> ± 20   |
| <b>Thickness/</b> Espesor   |                         | 1,8 mm   |
| <b>Flammability index</b><br>Índice de inflamabilidad<br>AS 1530.2      |                         | 38   |
| <b>Length of rolls/</b> Longitud de piezas                              |                         | 40 m   |





| Colour                                | Cover factor | Shade factor | UVR Block | UVE% | Protection Category |
|---------------------------------------|--------------|--------------|-----------|------|---------------------|
| 7683 Commercial Dualshade CITRUS      | 91           | 87.0         | 91.9      | 91   | Very effective      |
| 7680 Commercial Dualshade CHAMELEON   | 90           | 86.4         | 90.3      | 91   | Very effective      |
| 7684 Commercial Dualshade MACAW       | 92           | 83.3         | 90.7      | 90   | Effective           |
| 7688 Commercial Dualshade SUNBURST    | 91           | 75.2         | 90.6      | 91   | Very effective      |
| 7690 Commercial Dualshade TOPAZ       | 92           | 85.8         | 90.6      | 90   | Effective           |
| 7681 Commercial Dualshade AMAZONIA    | 92           | 91.1         | 92.4      | 91   | Very effective      |
| 7686 Commercial Dualshade COBBLESTONE | 93           | 90.3         | 93.6      | 93   | Very effective      |
| 7685 Commercial Dualshade GOLD RUSH   | 91           | 88.3         | 91.5      | 90   | Effective           |
| 7691 Commercial Dualshade SAVANNA     | 92           | 80.1         | 92.3      | 91   | Very effective      |
| 7687 Commercial Dualshade CAPRI       | 92           | 83.9         | 92.1      | 91   | Very effective      |
| 7682 Commercial Dualshade MALDIVES    | 91           | 88.4         | 90.9      | 90   | Effective           |
| 7689 Commercial Dualshade SANTORINI   | 93           | 83.3         | 92.2      | 92   | Very effective      |





**TOLDOS Y CERRAMIENTOS MARE NOSTRUM**

Pol. Ind. Ull Fondo, C/ Cabeçol, 37

12539 - Alquerias - Castellon

Tel. 964 534 208

info@toldosmarenostrum.es

**[www.toldosmarenostrum.es](http://www.toldosmarenostrum.es)**